



www.dovechem.com



- China – Hong Kong – Indonesia – Malaysia – Singapore – Taiwan - Thailand – Vietnam -

DOVECHEM GROUP OF COMPANIES

Corporate Presentation

www.dovechem.com

**Europe
2007**



www.dovechem.com

DOVECHEM

GROUP OF COMPANIES



Snapshot



Mission



Organization Structure



Businesses

Q&A



www.dovechem.com

DOVECHEM

Snapshot



47 Years of
Industrial
Experiences
and still
Growing



*Group
Staff Force
of
1,084 Employees



Network
in 8 Asian
Markets and
Export
Worldwide



*Service a
Customer Base
of 4,190
Accounts



2006 Group
Turnover
of
USD 305 mil



*Currently
Maintaining
21 Active
SBUs



Operate
4 Main Divisions;
1) Distribution
2) Manufacturing
3) Bulk Terminals
4) Transportation



One-Stop
Chemical
Solution
Center

*

•Information as at June 2007



www.dovechem.com

DOVECHEM

C.A.R.E. MISSION

CUSTOMER FOCUS

We create lasting value for our customers by delivering quality products and excellent services in a win-win situation. We value customer satisfaction and nurture long-term customer relationships.

ADMIRABLE POSITION AND CORPORATE CITIZEN

We position our organization to grow through its infrastructure, network, services, and reputation. At the same time, we commit to be a good corporate citizen by acting responsibly towards our environment and living in harmony with our society.

RESPONSIBILITY TO STAKEHOLDERS

We protect and increase our stakeholder values and provide favorable returns.

EMPLOYEE EXCELLENCE

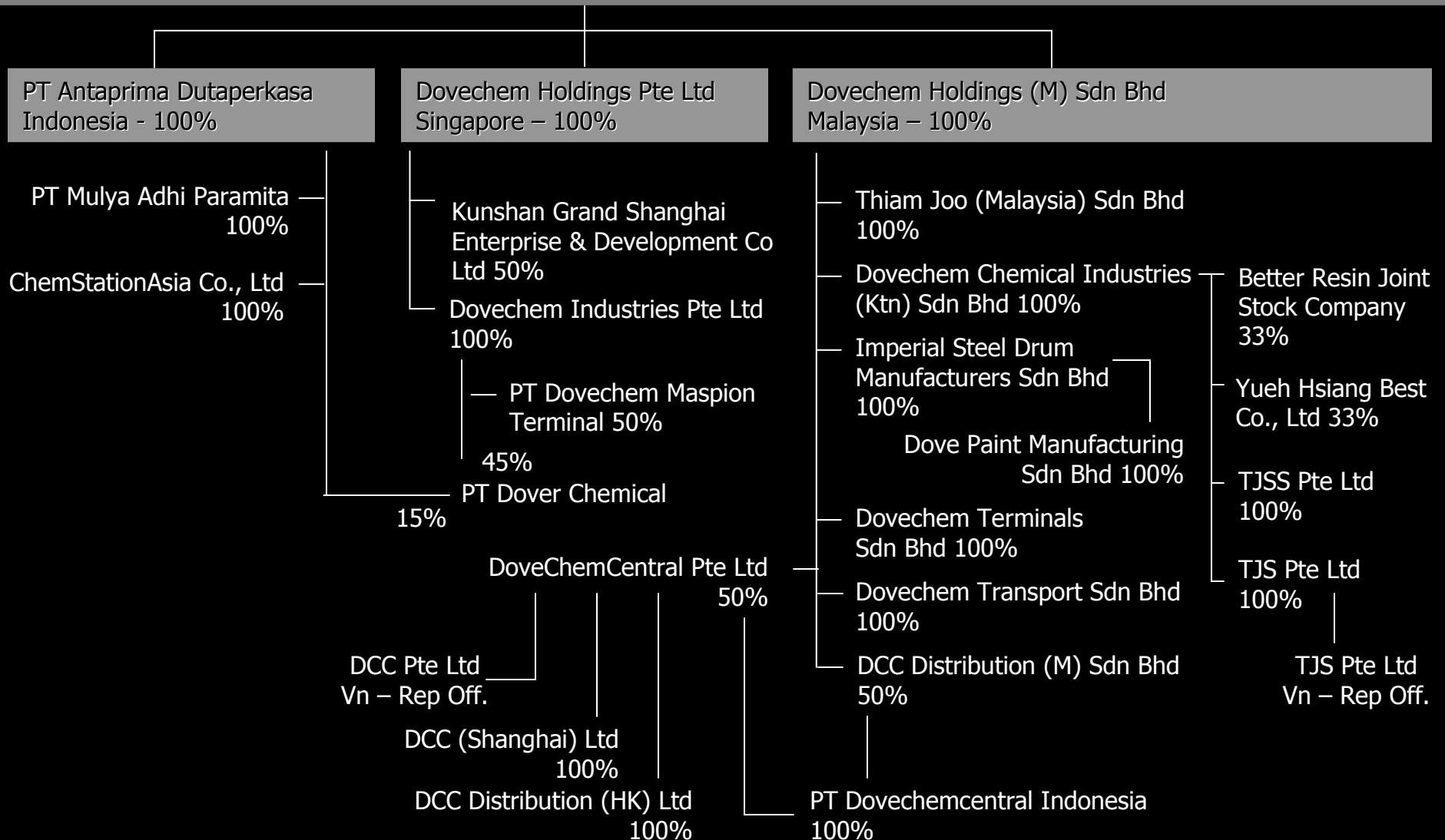
We groom our employees to be part of the productive corporate family by enhancing their professional development, conducive working environment and good welfare program.



www.dovechem.com

DOVECHEM GROUP STRUCTURE

Dovechem Family

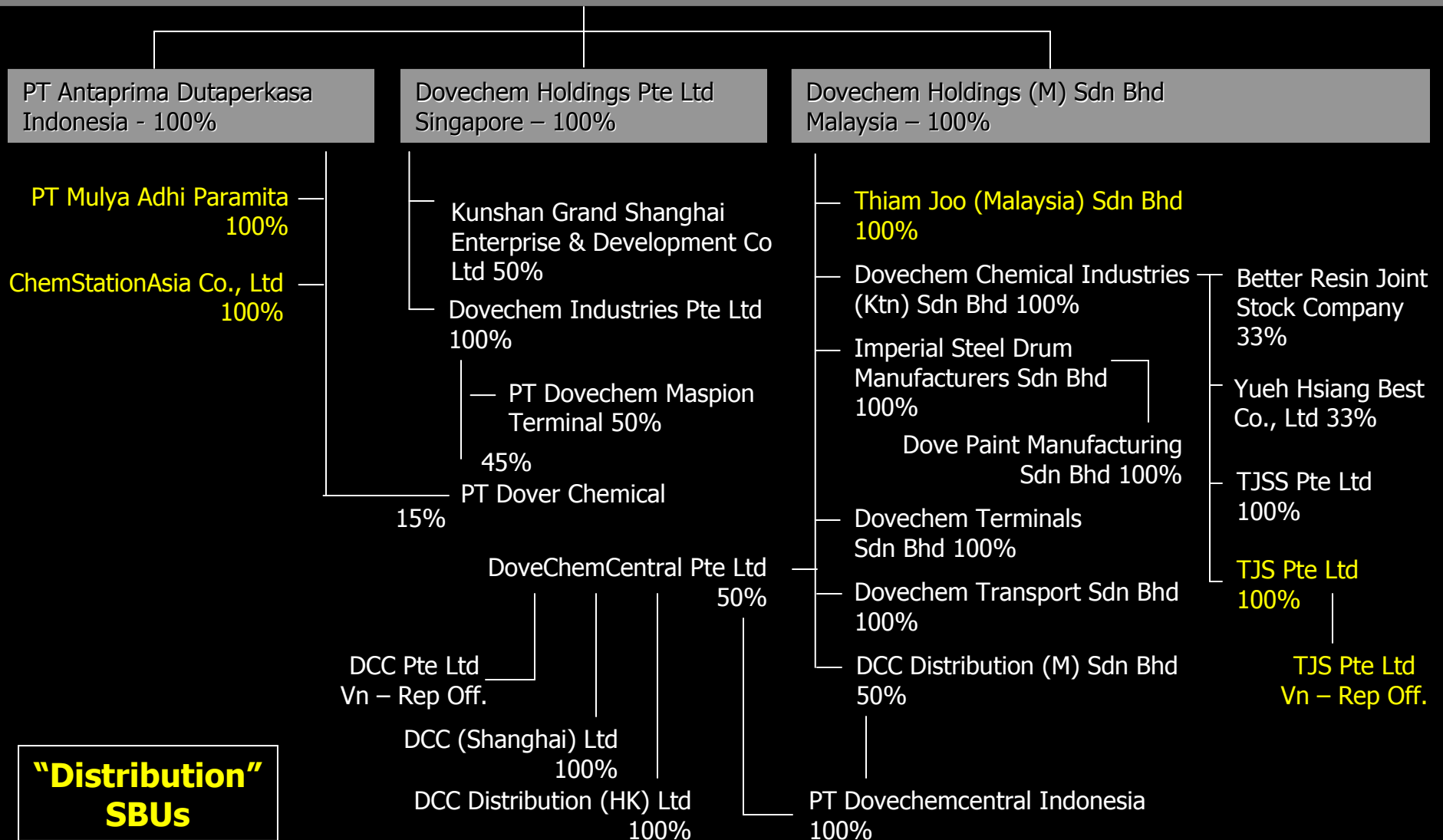




www.dovechem.com

DOVECHEM GROUP STRUCTURE

Dovechem Family

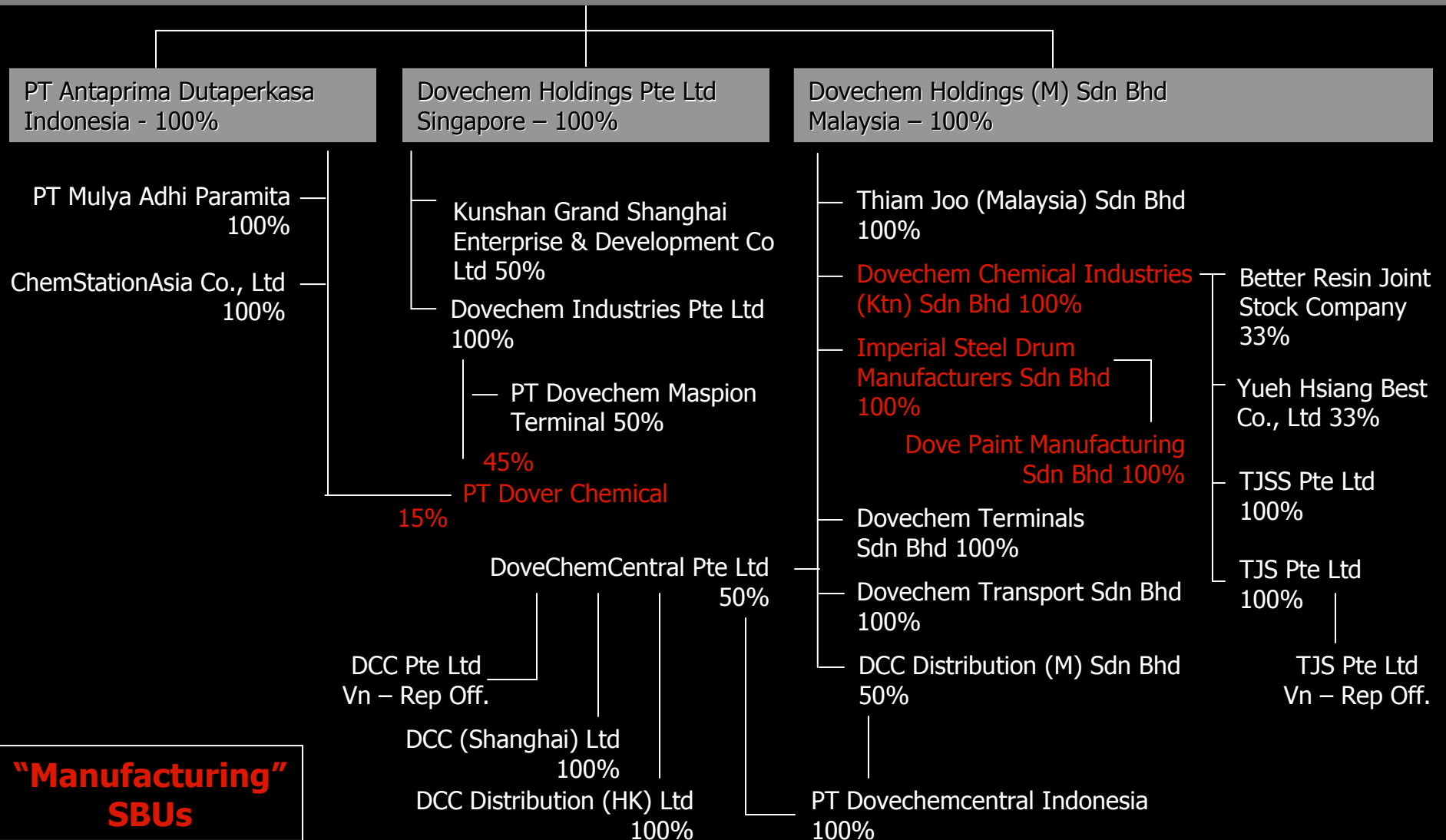




www.dovechem.com

DOVECHEM GROUP STRUCTURE

Dovechem Family

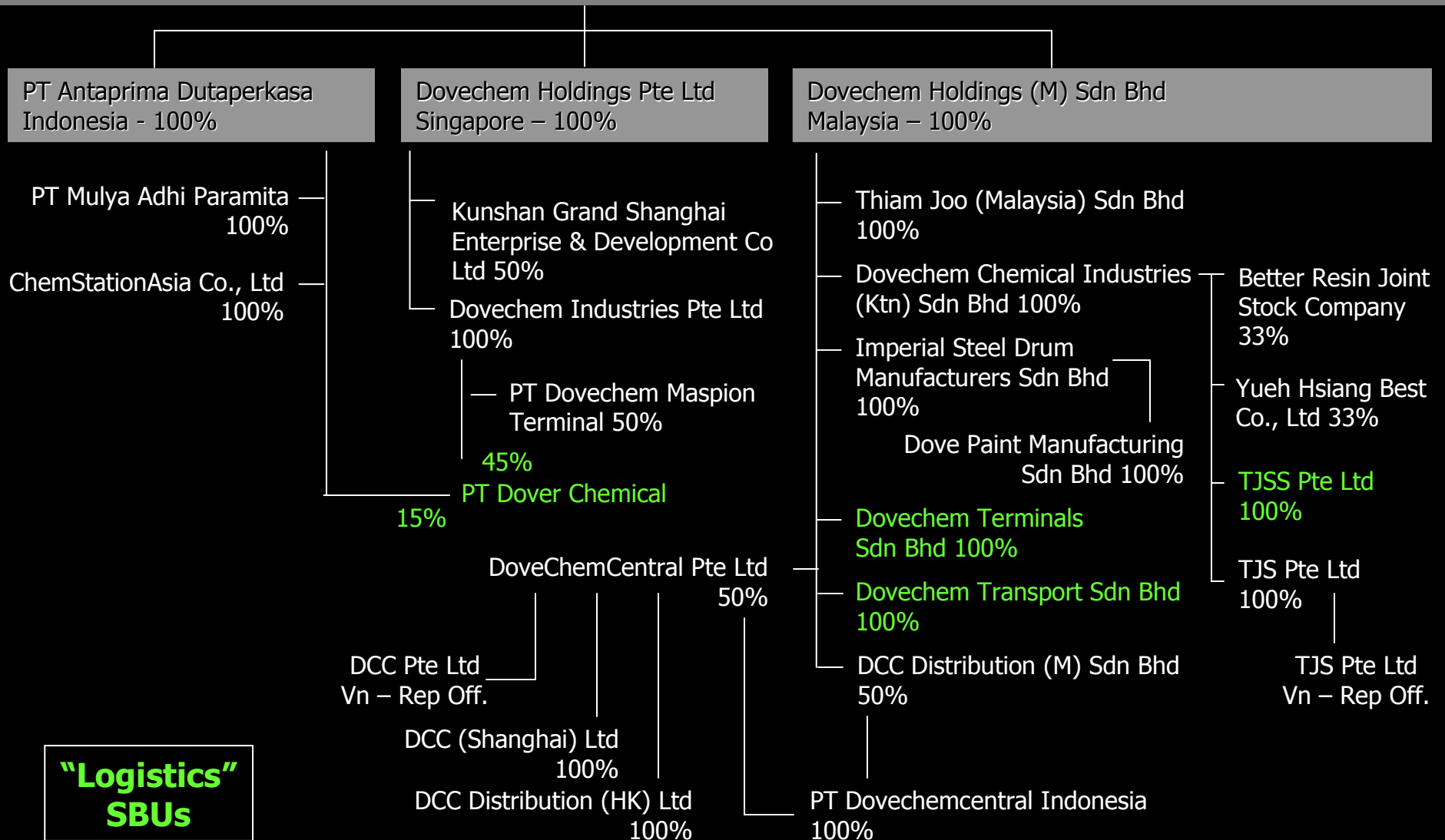




www.dovechem.com

DOVECHEM GROUP STRUCTURE

Dovechem Family

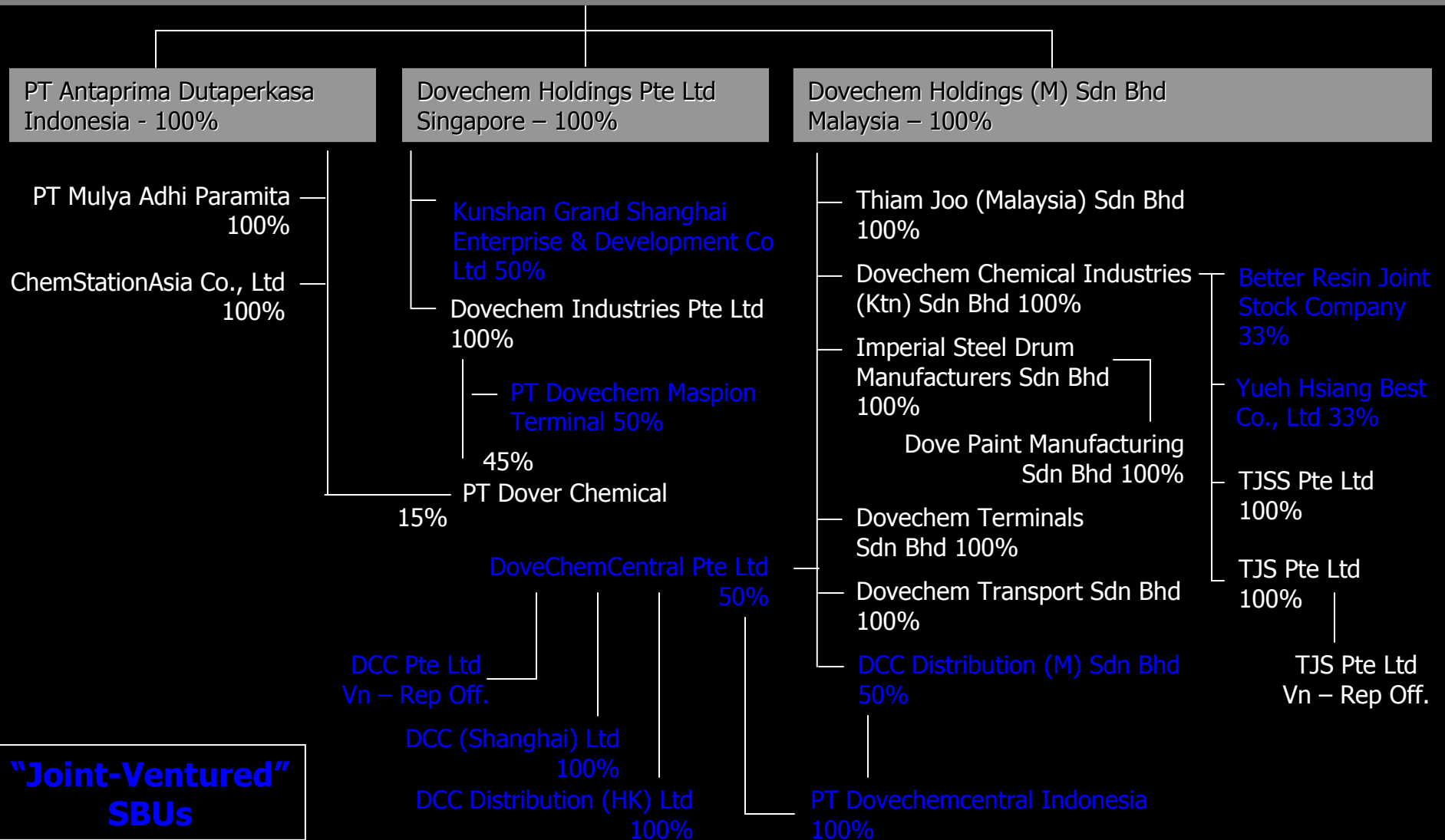




www.dovechem.com

DOVECHEM GROUP STRUCTURE

Dovechem Family





www.dovechem.com

DOVECHEM MANAGEMENT TEAM

Dato' Andrew NG
Group Managing Director/CEO

Group Human Resources
Dato' NG Koong Sinn

Group IT
Mr. Kelvin NG

Finance
Mr. NG Ek Cheong
Ms. YAP Siew Tin

Corporate/Secretariat/Legal
Mr. Edward WONG
Mr. Calvin TAN
Ms. Fifi Nancy Muliadi

Business Development
Ms. Christina NG

Solvent
Distribution
Mr. NG Aik Leng

Manufacturing
& Logistics
Dato' NG Koong Sinn

Specialty Chemical
Distribution
Ms. Christina NG

Central
Purchasing

Mr. Andy CHAN (SG)
Mr. Effendi (ID)
Mr. ONG Choon Seng (MY)

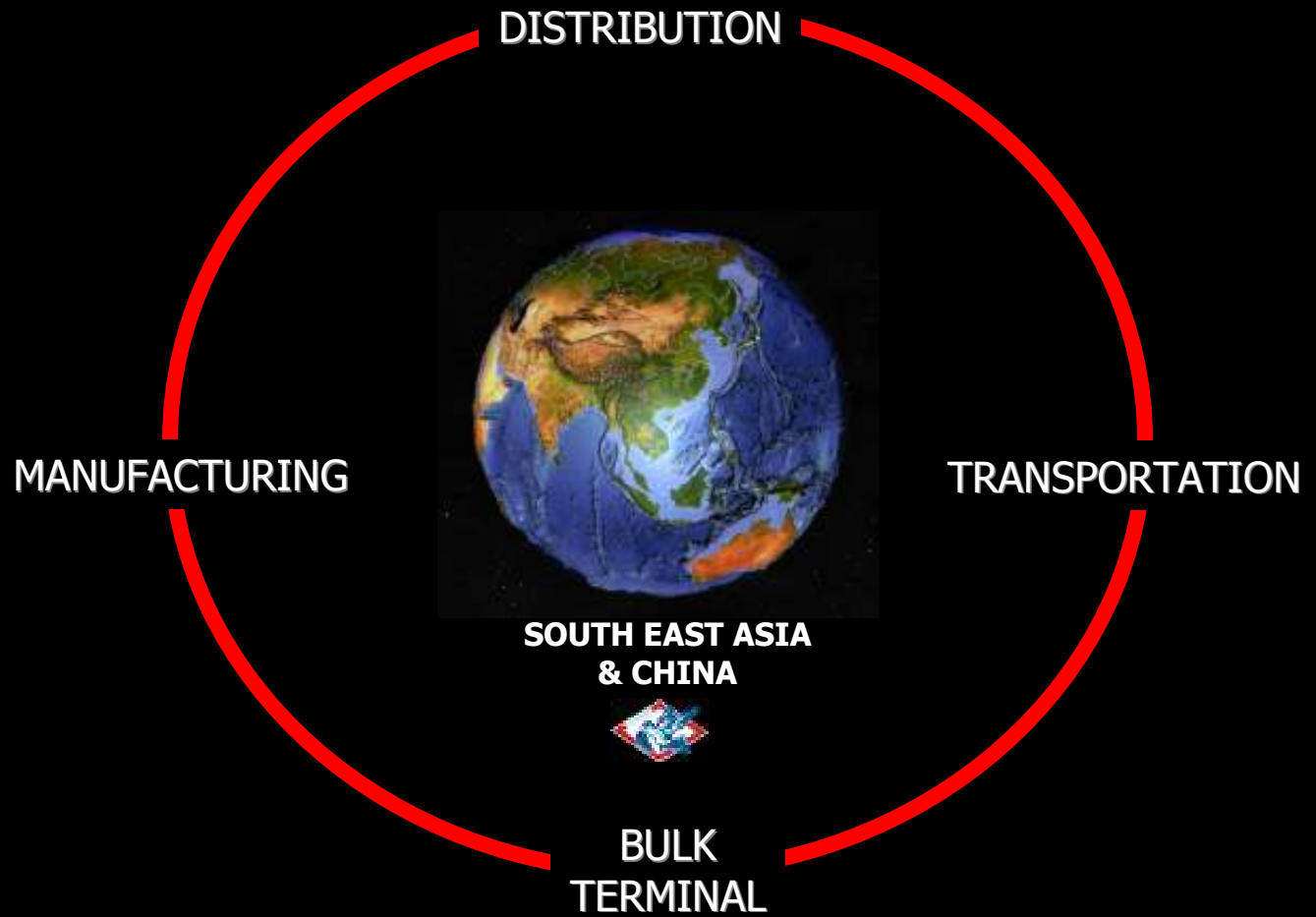
Mr. CHUA Kok Bock (SG)
Mr. Odang (ID)
Mr. CHEN Lai Peng (MY)

Mr. Alex YAP (SG/MY/VN)
Mr. Hendrawan (ID/PH)
Mr. Francis Szeto (CH)



www.dovechem.com

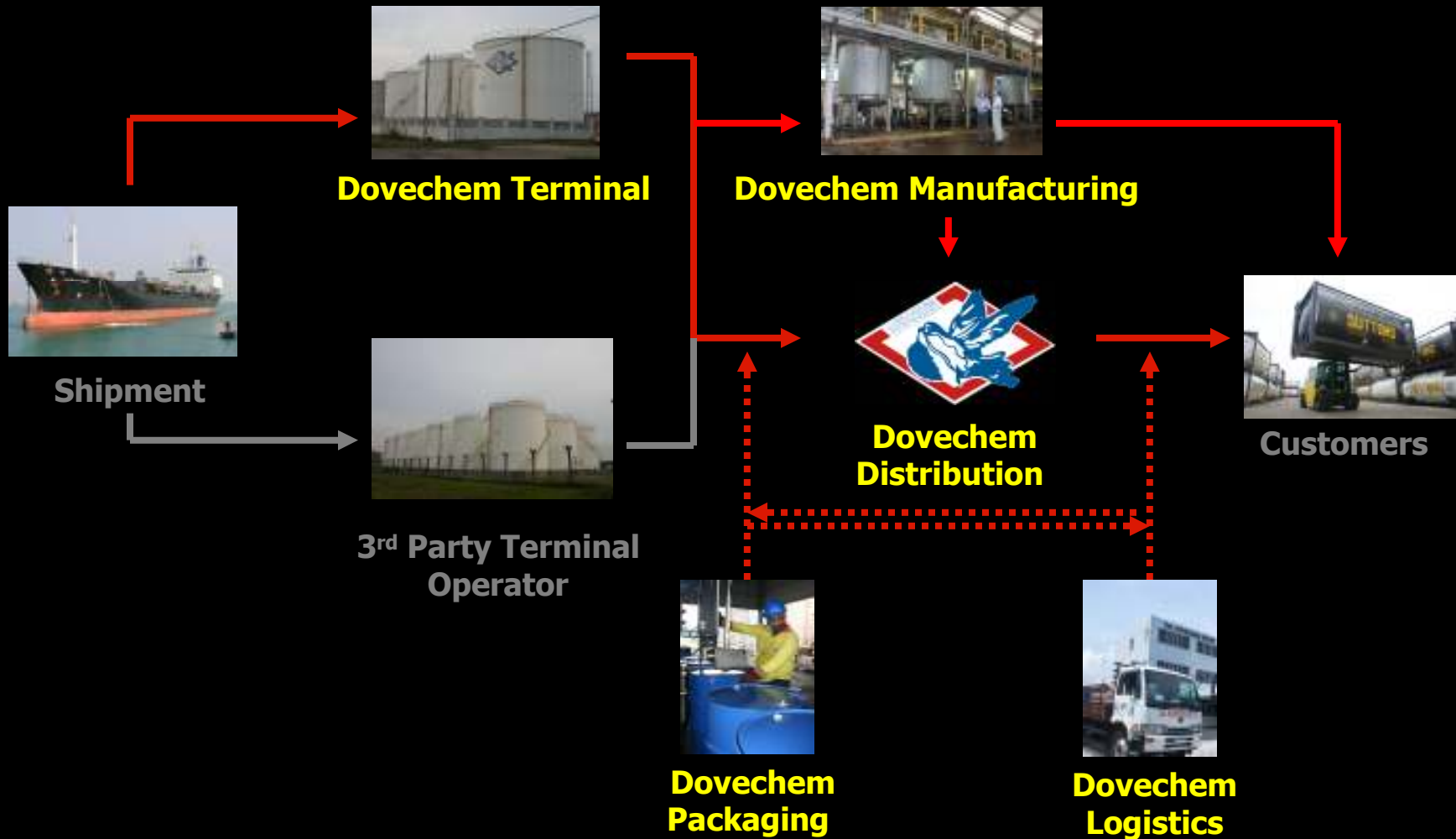
DOVECHEM BUSINESSES





www.dovechem.com

DOVECHEM BUSINESS SUPPLY-CHAIN





www.dovechem.com

DOVECHEM DISTRIBUTION



Dovechem Core Division



Straddled over 8 countries in 17 locations:

China - Shanghai, Shenzhen, Dalian

Hong Kong - Kowloon

Indonesia - Jakarta, Surabaya, Merak, Bandung

Malaysia - Kuala Lumpur, Kuantan,
Melaka, Penang, Johor Bahru

Singapore - Jurong

Thailand - Bangkok*

Taiwan - Kaoshiung

Vietnam - HCMC



Serving regional markets with Global Trading House in Singapore



Currently servicing more than 3,200 customer account

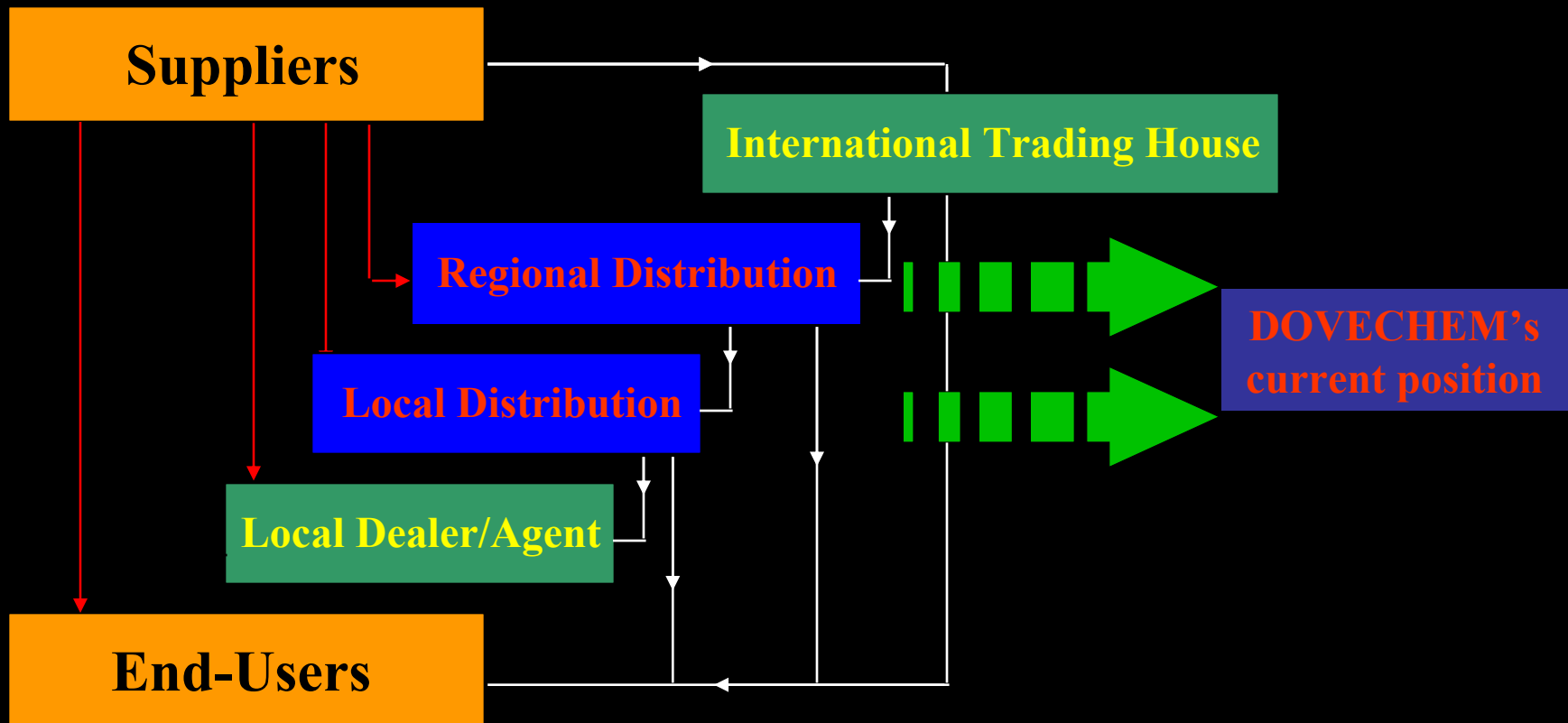
* Through VIV



www.dovechem.com

DOVECHEM DISTRIBUTION

DISTRIBUTION STRUCTURE

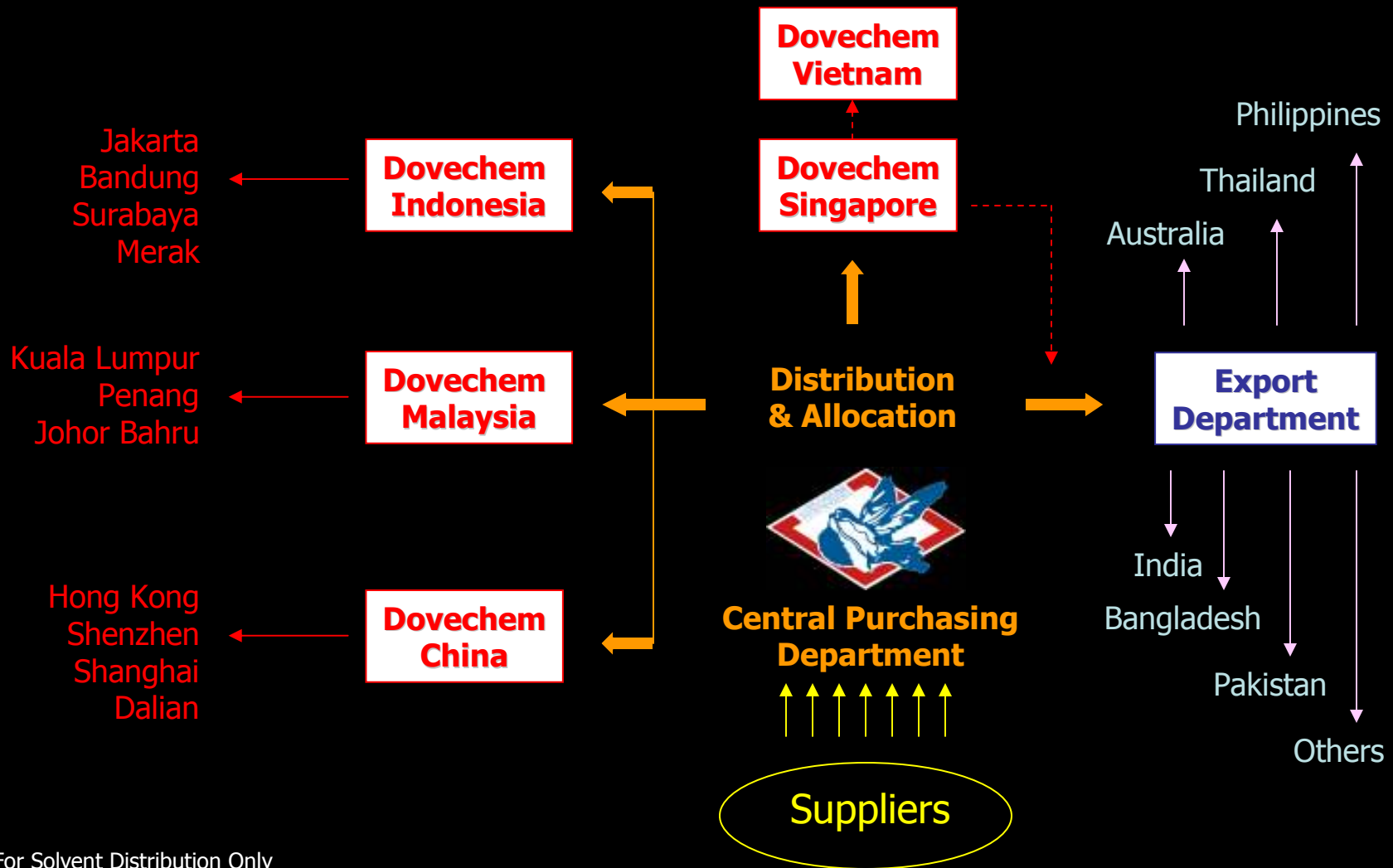




www.dovechem.com

DOVECHEM DISTRIBUTION

DISTRIBUTION CHANNEL



For Solvent Distribution Only



www.dovechem.com

DOVECHEM DISTRIBUTION

TOP 20 SOLVENT PRODUCTS

In Random Order



Toulene



Methanol



Xylene



Ethyl Acetate



Methyl Ethyl Ketone



Acetone



White Spirit



Thinner



Isopropyl Alcohol



Butyl Cellosolve



C9



Butyl Acetate



Isobutanol



Aliphatic Solvents



Methyl Isobuthyl Ketone



C10



Diethylene Glycol



Nitro Cellulose Solution



Vinyl Acetate Monomer



Isopropylol



www.dovechem.com

DOVECHEM DISTRIBUTION

CUSTOMERS BY INDUSTRIES



Paint



Coating



Packaging



Ink



Electronics



Pharmaceuticals



Adhesives



Agricultural



Rubber Manufacturing



Detergent/Cleaning



www.dovechem.com

DOVECHEM DISTRIBUTION

OUR STORAGE TANKS



Indonesia Storage Terminals:
47 units (69,460 m³)



Singapore Storage Terminals:
21 units (7,404 m³)



Malaysia Storage Terminals:
13 units (1,810 m³)



www.dovechem.com

DOVECHEM DISTRIBUTION

OUR OPEN-AREA STORAGE



Indonesia Open-Area Storage:
10,017 m² (31,920 drums)



Singapore Open-Area Storage:
1,350 m² (5,000 drums)



Malaysia Open-Area Storage:
11,208 m² (44,130 drums)

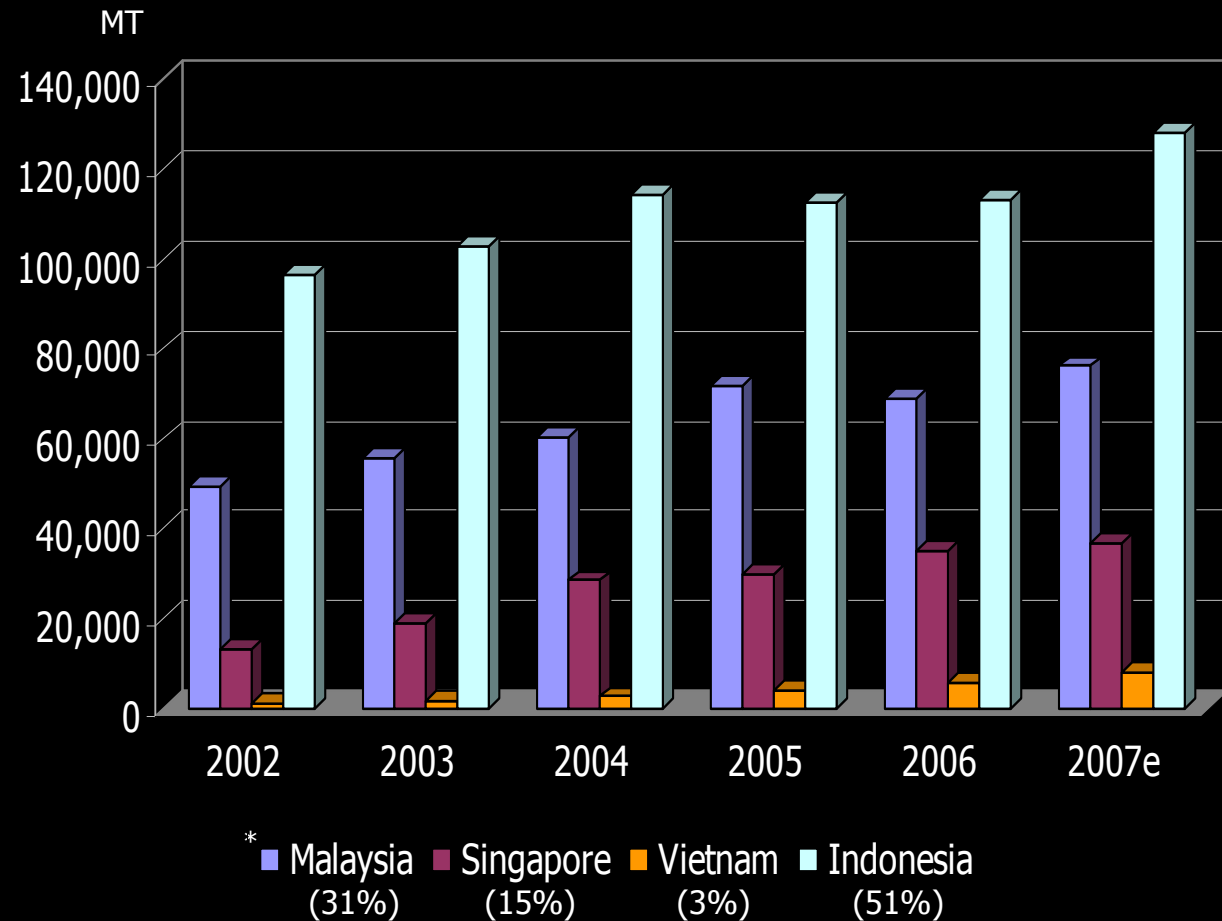
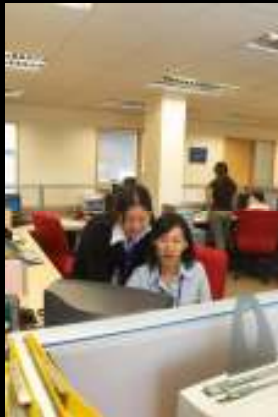
* Total including branches



www.dovechem.com

DOVECHEM DISTRIBUTION

SOLVENTS DISTRIBUTED VOLUME 2002-2007



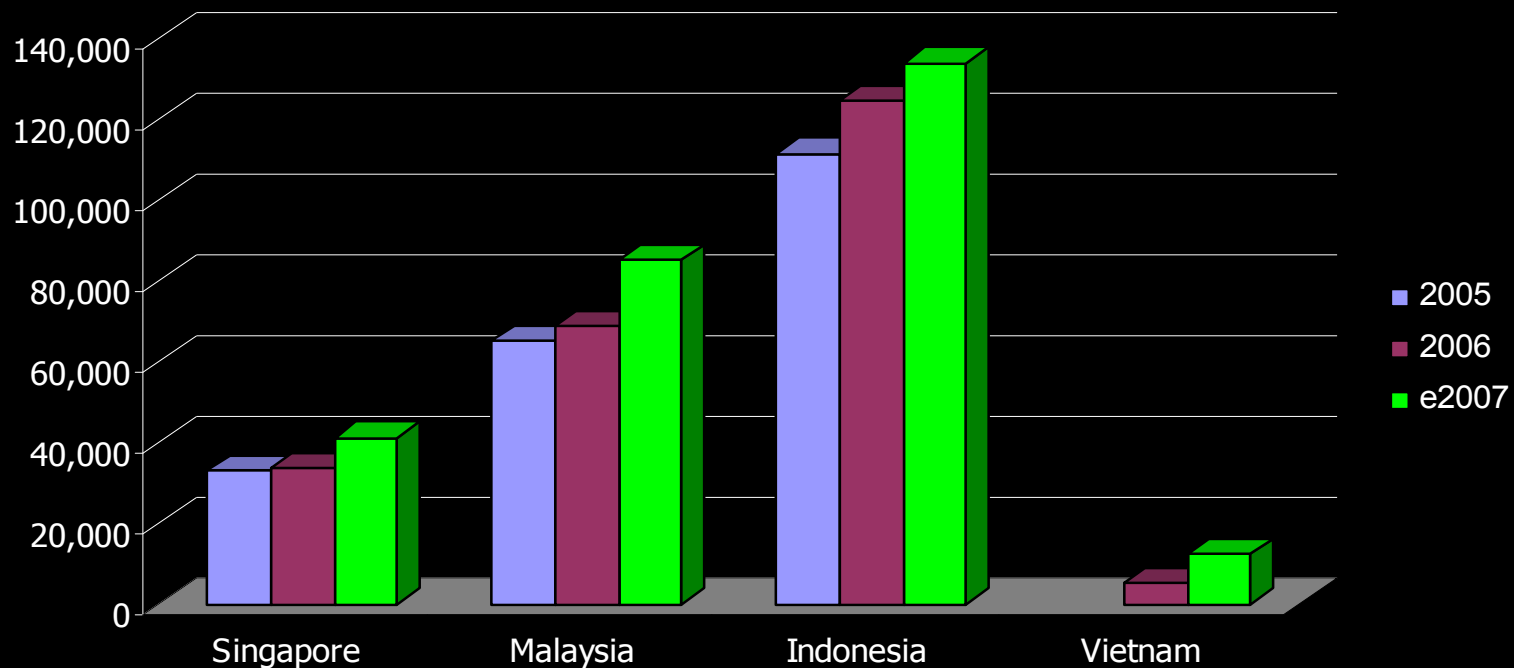
* For year 2007e



www.dovechem.com

DOVECHEM DISTRIBUTION

SOLVENTS DISTRIBUTED VOLUME 2002-2007 By Country



	Total 05 Actual (MT)	Total 06 Actual (MT)	Total 07 Budget (MT)
Group Total	209,850	231,947	272,860



www.dovechem.com

DOVECHEM MANUFACTURING



Dovechem & Partners manufacture various chemicals related products and packaging , such as resins, formalin, paint and steel drums



Maintain 5 manufacturing plant located in 4 countries:

Thailand - Bangkok

Vietnam - HCMC

Malaysia - Kuantan, Melaka

Indonesia – Merak



Running 2 R&D Laboratories in Kuantan and Merak



Currently servicing more than 730* customer account

* Excluding Thailand and Vietnam



www.dovechem.com

DOVECHEM MANUFACTURING

PRODUCTION DETAILS Paint & Packaging



Products	Drums	Aerosol Paint
Location	Melaka, Malaysia	Melaka, Malaysia
Commencement	1994	2005
Types	209L Tight Head/ Full Open Head	Aerosol/ Stoving Paint
Annual Capacity	600,000 units	1,440,000 cans



www.dovechem.com

DOVECHEM MANUFACTURING

PRODUCTION DETAILS Chemical Products



Products	Formalin/Resins	Formalin/Resins/ PVAc	Formalin/Resins/ PVAc
Location	Kuantan, Malaysia	Merak, Indonesia	HCMC, Vietnam
Commencement	1991	1983	1996
Types	For Plywood, MDF, Particle Board & Furniture	For Plywood, MDF, Particle Board & Furniture	For Plywood, MDF, Particle Board & Furniture
Annual Capacity	Formalin: 36,000 MT Resins: 45,000 MT	Formalin: 80,000 MT Resins: 100,000 MT PVAc: 12,600 MT	Formalin: 58,000 MT Resins: 41,880 MT PVAc: 1,800 MT



www.dovechem.com

DOVECHEM

BULK TERMINAL



To ensure that all chemical products are well stored in good condition, and to reach the customers, Dovechem operates 5 bulk terminals with value-added services.



The bulk terminals are located at:

Malaysia - Shah Alam, Kuantan

Singapore - Jurong

Indonesia - Merak, Surabaya



Some of the provided value-added services are tank cleaning, drum filling, bonded warehouse, heating & insulation services, etc



www.dovechem.com

DOVECHEM

BULK TERMINAL

TERMINAL CAPACITY



Locations	No of Tanks	Capacity	Consumptions
Kuantan, Malaysia	41 (current) 2 (planned)	49,700 m ³ 2,500 m ³	Internal/External
Shah Alam, Malaysia	13 (current)	1,850 m ³	Internal
Merak, Indonesia	46 (current)	59,000 m ³	Internal/External
Surabaya, Indonesia	19 (current) 5 (planned)	15,510 m ³ 5,000 m ³	Internal/External
HCMC*, Vietnam	3 (current) 5 (planned)	3,500 m ³ 6,250 m ³	Internal
Jurong, Singapore	21 (current)	7,404 m ³	Internal

*Leased



www.dovechem.com

DOVECHEM

BULK TERMINAL

TANK CLEANING STATION



Dovechem operates a Tank Cleaning Depot at the Kuantan, Malaysia facilities



Operations started since 2003 and is the pioneer tank cleaning depot in the East Coast of Malaysia



The depot has a capacity to clean 2,880 units of ISO Tanks and 2,304 units of Road Tankers per annum.





www.dovechem.com

DOVECHEM TRANSPORTATION



To complement for a "one-stop chemical solution center", Dovechem manages its own fleet of vehicles for internal used and external customers.



Our logistic hub is located in 4 major cities as follows:

Malaysia - Kuantan, Shah Alam

Indonesia - Jakarta

Singapore - Jurong



To value-add, Dovechem also provide haulage services, and delivery planning for customers.





www.dovechem.com

DOVECHEM TRANSPORTATION

FLEET DETAILS



Locations	Kuantan, Malaysia	Shah Alam Malaysia	Merak, Indonesia	Jurong, Singapore
Types	ISO Tankers, Road Tankers, Cargo Trailers	Road Tankers, Light Trucks	Road Tankers, Light Trucks	Road Tankers, Light Trucks
Fleet Managed	130	8	89	27



We manage a fleet of 254 units of vehicles for the Group.



www.dovechem.com

DOVECHEM TRANSPORTATION

TYPES OF VEHICLES



ISO Tankers – 26,000 Litres



Stainless Steel Tankers – 28,000 Litres



Light Trucks – carry up to 50 Drums



Aluminum Tankers – 25,000 Litres

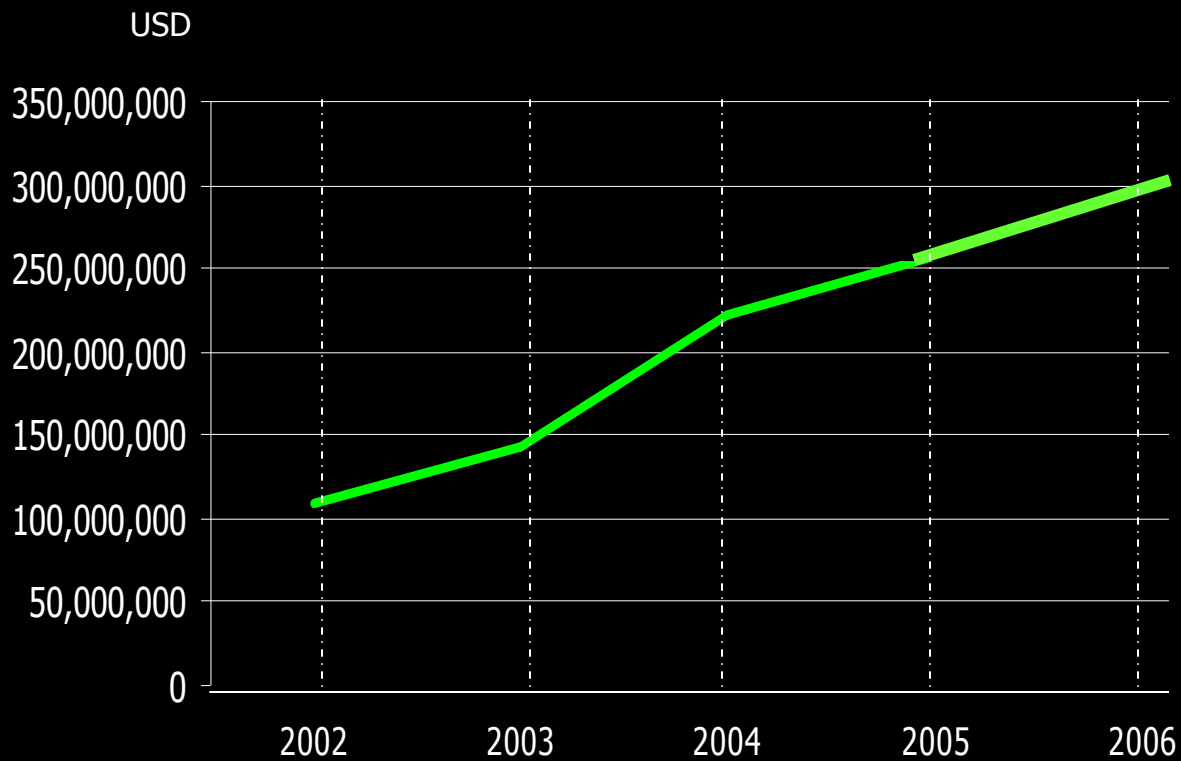


www.dovechem.com

DOVECHEM

GROUP CONSOLIDATION

GROUP TURNOVER 2002 – 2006



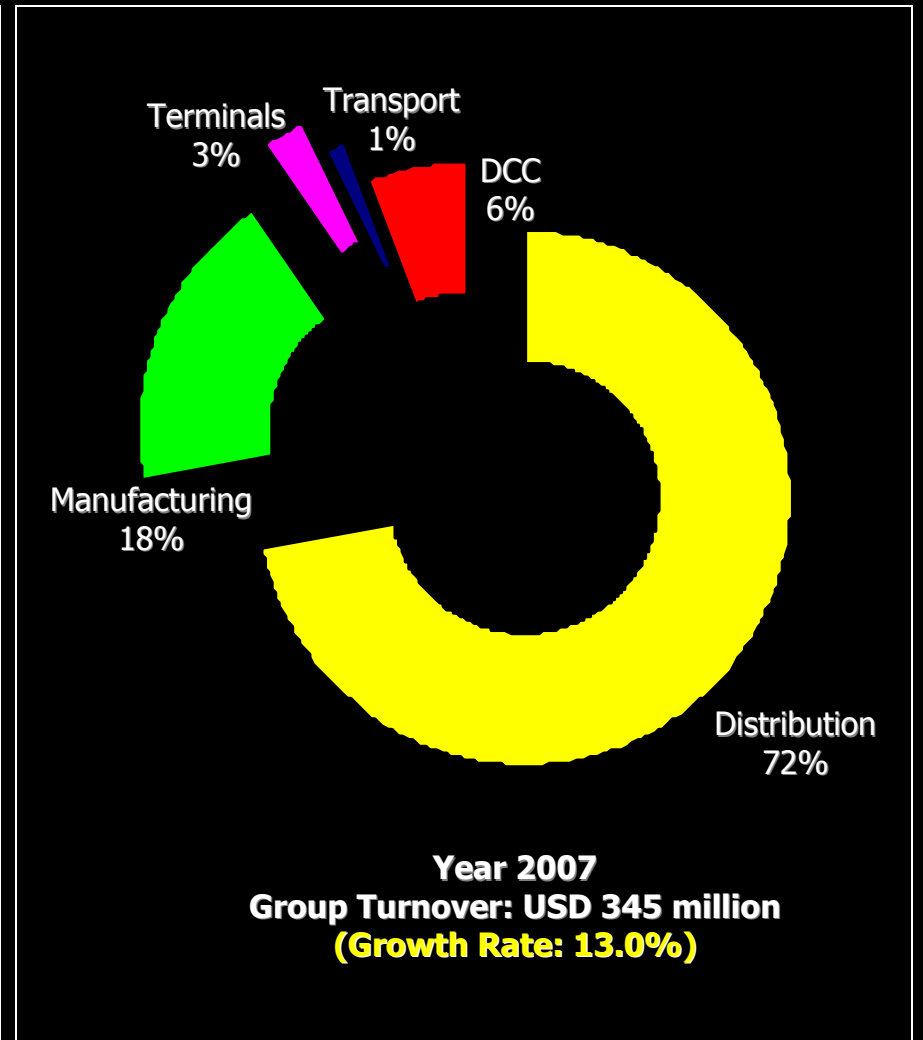
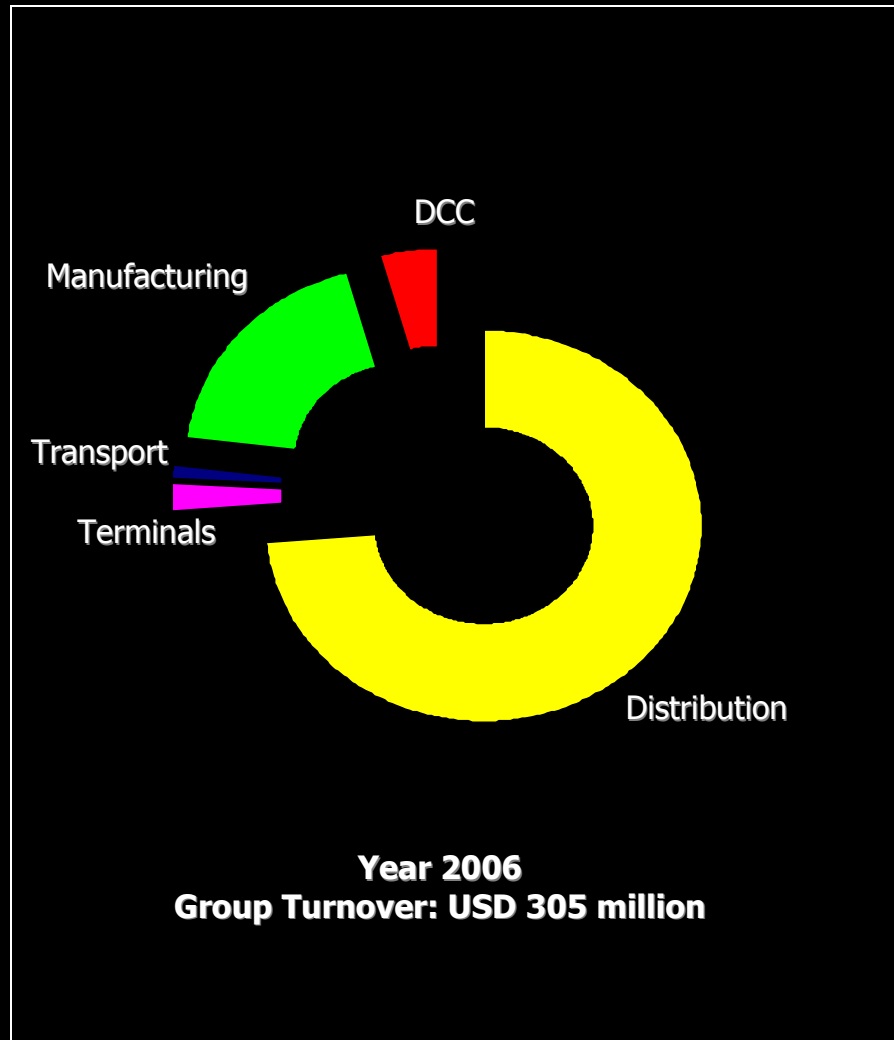


www.dovechem.com

DOVECHEM

GROUP CONSOLIDATION

EXPECTED GROWTH 2006 - 2007





www.dovechem.com

DOVECHEM GROUP

DOVECHEM CORE VALUES



-  **GREENING** the Environment
-  **EXPANDING** the Business
-  **SHARING** for Community
-  **BUILDING** the Talent
-  **PARTNERING** with Suppliers/Customers
-  **EXPLORING** the Opportunities

We have various-colours for our core values to represents various-nationalities working in various Dovechem locations.



www.dovechem.com

DOVECHEM GROUP

Q & A

Caring for All